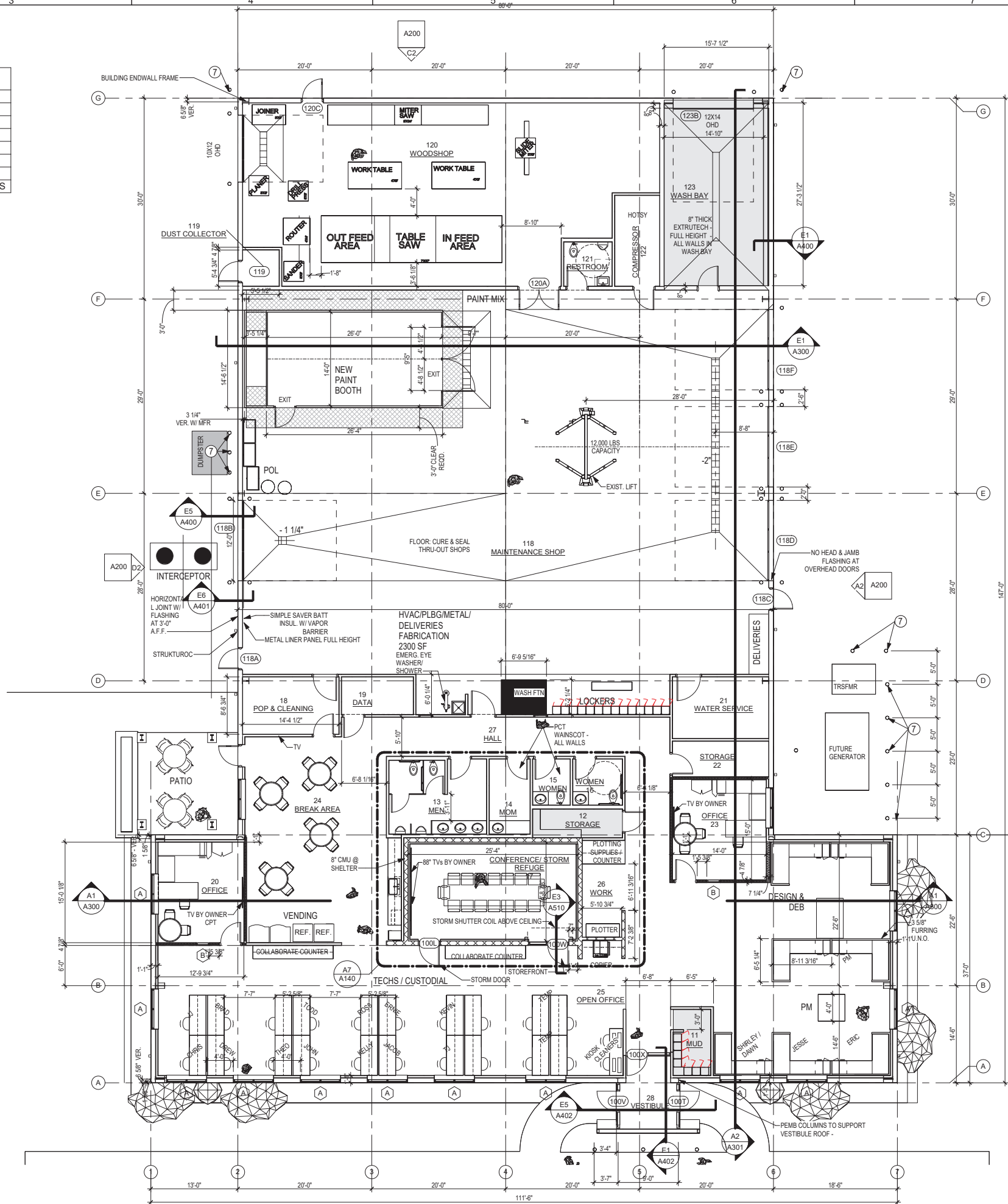


RESTROOM ACCESSORIES	
MARK	DESCRIPTION
W1	PAPER TOWEL DISPENSER -RECESSED (BOBRICK #: B-359033)
W3	TP DISPENSER
W4	NAPKIN RECEPTACLE (BOBRICK #: B-270)
W6	SOAP DISPENSER
W12	ADA GRAB BAR SET: ONE @ 36", ONE @ 42" HORIZONTAL, ONE @ 18" VERTICAL
W14	18"x36" MIRROR, SEE DETAIL
W15	TOILET PARTITION: FLOOR SUPPORTED W/ HEADRAIL, 1" SOLID HDPE, WEIS ROBERT TOILET PARTITIONS

**PRE-ENGINEERED BUILDING (PEMB) NOTES:**

- METAL BUILDING MANUFACTURER TO LOCATE END WALL COLUMNS TO NOT CONFLICT WITH WALL OPENINGS.
- BUILDING FRAME COLUMNS ON GRIDS A, B, & C TO BE STRAIGHT.
- PEMB MANUFACTURER IS RESPONSIBLE FOR STRUCTURAL DESIGN BY A STATE OF IOWA REGISTERED STRUCTURAL ENGINEER.
- ALL MAIN WIND FORCE RESISTING SYSTEMS TO BE SELECTED AND LOCATED BY PEMB ENGINEER AS TO NOT CONFLICT W/ WALL OPENINGS SHOWN ON ARCHITECTURAL PLANS & ELEVATIONS. PROVIDE PROPOSED TYPE AND LOCATIONS WITH ARCHITECT PRIOR TO SUBMITTING BID.
- OUTSET GIRTS AT SIDE WALLS (EAST AND WEST)
- INSET GIRTS AT ENDWALLS WALLS (NORTH AND SOUTH). EXTERIOR FACE OF GIRT TO EXTEND 1 5/8" OUT FROM EXTERIOR FACE OF BUILDING ENDWALL FRAME.
- PROVIDE COLUMNS AND BEAM TO SUPPORT CONVENTIONAL STEEL FRAMED ROOF STRUCTURE AT VESTIBULE. EXTEND COLUMNS FROM FOUNDATION TO BUILDING FRAME ABOVE ON GRID A. CONVENTIONAL STEEL STRUCTURE SHOWN ON SHEETS A402 & S120.
- EXTERIOR FACE OF GIRTS ARE LOCATED ON ARCHITECTURAL GRID LINES AND REPRESENT FACE OF STEEL.
- INCLUDE TWO ELBOWS PER DOWNSPOUT TO ALLOW TIE-IN TO STORM TILES PROUD OF TRENCH FOOTING.
- PROVIDE STRUCTURAL STANDING SEAM ROOF W/ GALVALUME FINISH.
- EXTERIOR WALL PANELS - SEE ALTERNATES LISTED ON COVER SHEET.
- PROVIDE ROOF EDGE FLASHING, GUTTERS AND DOWNSPOUTS.
- SEE SHEETS SP13.0 & SP13.1 FOR PEMB SPECIFICATIONS.
- ROOF LIVE LOAD: 20 PSF LIVE LOAD, + ROOF SNOW LOAD DETERMINED BY METAL BUILDING ENGINEER (MINIMUM 24 PSF REQUIRED BY CITY). COLLATERAL LOAD: 7 PSF FOR LIGHTS, MECHANICAL, ELECTRICAL, SPRINKLER, ETC.
- SPECIAL DEFLECTIONS:  
 A. BEAMS OVER STOREFRONTS: 1/720  
 B. STRUCTURE SUPPORTING BRICK ON STUD WALLS ABOVE ROOF: 1/360 VERTICAL  
 C. GIRTS SUPPORTING EIFS AND BRICK: 1/360 HORIZONTAL



**E5 FLOOR PLAN**  
A110 1/8" = 1'-0"

TOTAL GROSS AREA: 12,920 SF

FIELD BULLETINS ASSOCIATED WITH THIS SHEET:	

GENERAL CONTRACTOR - ARCHITECT  
 NEUMANN BROTHERS, INC. - DESIGNBUILD SOLUTIONS  
 1435 ohio street, p.o. box 1315 • osea, moines, ia 50305-1315  
 phone: (515) 243-0150 fax: (515) 243-0165

**neumann**  
 builders since 1912

**DESIGNBUILD**  
 SOLUTIONS

**MUSCO SPORTS LIGHTING  
 FACILITY OPERATIONS BUILDING**

**FLOOR PLAN**

**A110**

604 2nd Avenue west, Oskaloosa, Iowa

DRAWN BY: Author/CHECKED BY: DBS #: 22-3-445 NBI #: ...